

FCC Notice: This device complies with Part 15 of the FCC rules. Operation is subject to the following two conditions: (1) this device may not cause harmful interference, and (2) this device must accept any interference received, including interference that may cause undesired operation.

Caution: changes or modifications not expressly approved by Monster Cable Products, Inc. may void the users authority to operate this device.

Note: This equipment has been tested and found to comply with the limits for a class B digital device pursuant to Part 15 of the FCC rules. These limits are designed to provide reasonable protection against harmful interference in a residential installation. This equipment generates, uses, and can radiate radio frequency energy and, if not installed and used in accordance with the instructions, may cause harmful interference to radio communications. However, there is no guarantee that interference will not occur in a particular installation. If this equipment does cause harmful interference to radio or television reception, which can be determined by tuning the equipment off and on, the user is encouraged to try to correct the interference by one or more of the following measures:

- Reorient or relocate the receiving antenna
- Increase the separation between the equipment and receiver
- Connect the equipment into an outlet on a circuit different from that to which the receiver is connected
- Consult the dealer or an experienced radio/TV technician for help.

FCC ID : RJE160836-00

#### **MONSTER SAFETY TIP**

---

Changing iRadioPlay while driving may cause serious injury and/or death. Drive responsibly—connect and set iRadioPlay **BEFORE** operating your vehicle and pay attention to the road while driving.

Come Visit the Monsters at [MonsterMobile.com](http://MonsterMobile.com)

**MONSTER MOBILE**  
*High Tech Accessories To Go™*

Monster Cable Products, Inc.  
455 Valley Drive Brisbane, CA 94005 USA  
Phone 415-840-2000

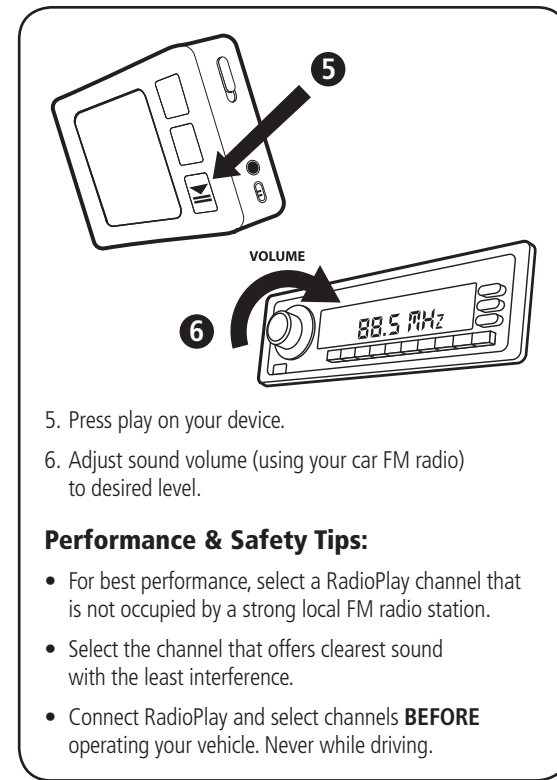
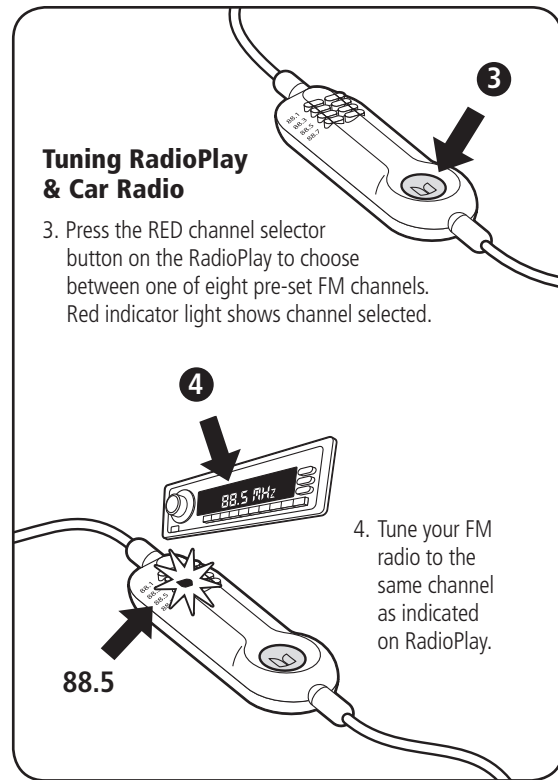
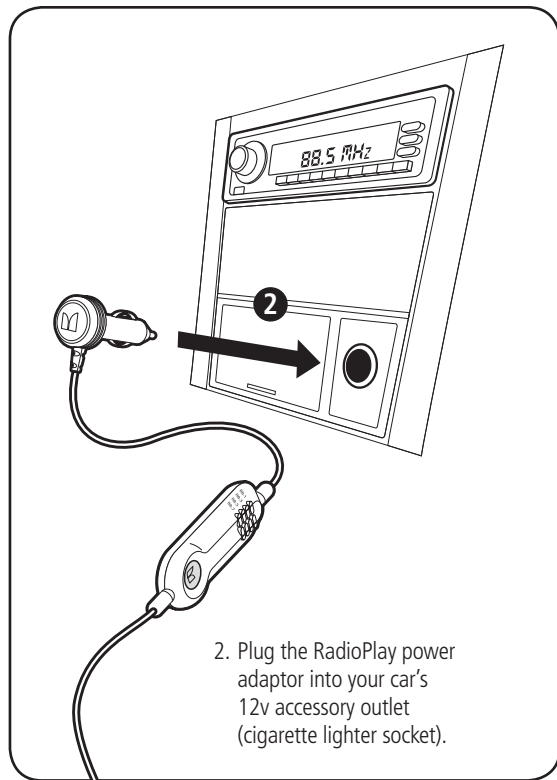
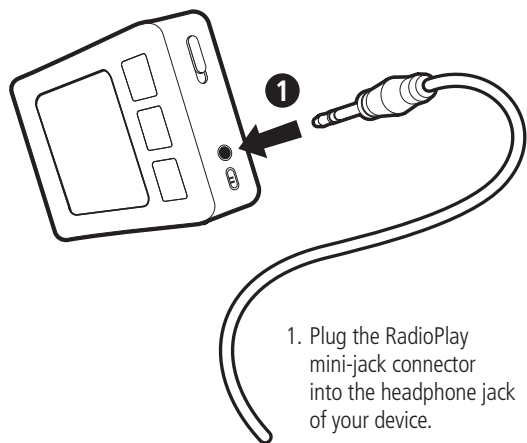
Designed by Monster in the U.S. and manufactured for Monster in China.

# MONSTER MOBILE®

## RadioPlay™ 200 Car Stereo Wireless FM Transmitter

### User Guide

#### Connecting RadioPlay™



- The RadioPlay transmitter strength is regulated and limited by the FCC. RadioPlay transmits at the power allowable by law.
- RadioPlay is designed to transmit within your car's perimeter while not interfering with surrounding public.
- RadioPlay acts just like a tiny FM radio station, however no FM transmitter will ever sound like your favorite 50,000 watt radio station.
- Certain cars may experience more difficulty receiving clear signals than others. Location of the antenna can affect signal strength. Some vehicles have a metallic film in the windows which can also make it harder to receive clear signals.
- In dense metropolitan areas, there are cases where all RadioPlay pre-set stations are occupied by local radio stations. Sometimes a station setting next to a local station may be strong enough to 'bleed' over to the adjacent frequencies.
- Radio frequencies from local stations can 'bounce' from hills and buildings and cause momentary interference.
- Steel bridges and parking garages may act like antennae; strengthening local and distant radio station signals. You may need to wait until you are "over the bridge" or "out of the structure" for clearest reception.